

Ashton Road

BEDMINSTER

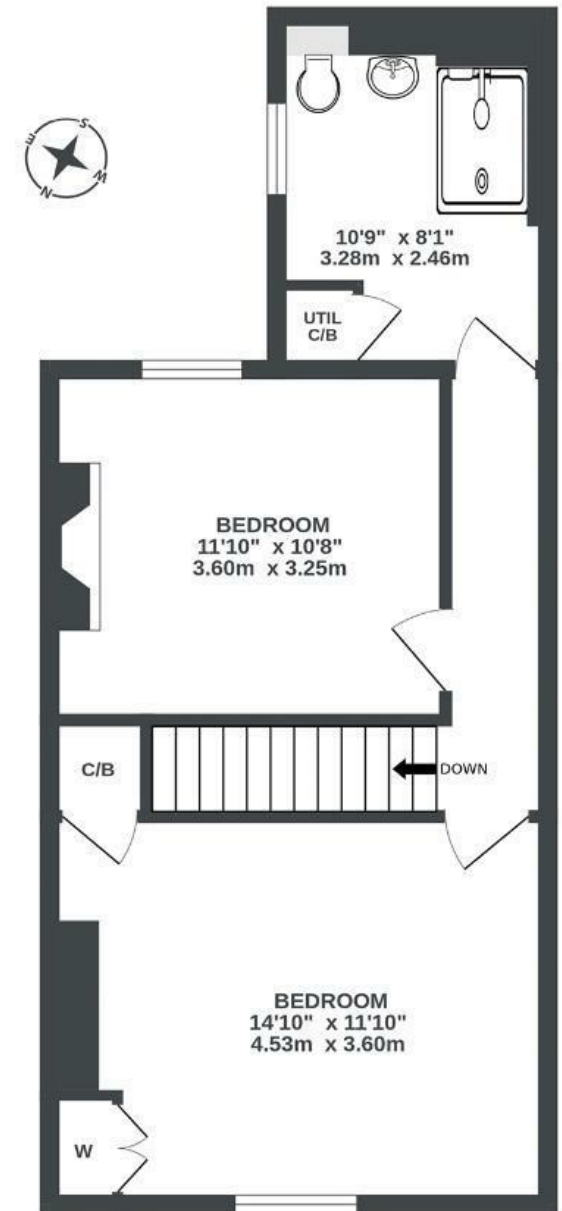
APPROXIMATE FLOOR AREA
83.5 SQM / 899 SQFT



GROUND FLOOR
455 sq.ft. (42.2 sq.m.) approx.



1ST FLOOR
445 sq.ft. (41.3 sq.m.) approx.



Illustrations are for reference purposes only, measurements are approximate, not to scale.

Boardwalk

Ashton Road , BRISTOL

£

£400,000



BS3 2EG

zzz

2 Bedrooms



1 Bathrooms

"Ashton Road has been the perfect first home for us. Our home is deceptively spacious, with well-sized rooms throughout and a real suntrap of a garden - we have spent many summer evenings watching the balloons float by from Ashton Court! The location is ideal, walk one way you have North Street and easy access to the Harbourside, walk the other you are in Ashton Court and into the surrounding countryside. We will miss our walks around Greville Smyth Park, playing in the playground with our young son."

